

BALDOR • RELIANCE

Customer information packet

VJPFPM2549T-5

75HP, 3535RPM, 3PH, 60HZ, 364JP, 4250M, OPSB, F

Copyright © All product information within this document is subject to ABB Motors and Mechanical Inc. copyright © protection, unless otherwise noted.

7/18/2023 11:02:35 PM

Specifications

| | |
|--------------------------------|---------------------------|
| Enclosure | OPSB |
| Frame | 364JP |
| Frame Material | Steel |
| Frequency | 60.00 Hz |
| Motor Letter Type | Three Phase |
| Output @ Frequency | 75.000 HP @ 60 HZ |
| Phase | 3 |
| Synchronous Speed @ Frequency | 3600 RPM @ 60 HZ |
| Voltage @ Frequency | 575.0 V @ 60 HZ |
| Agency Approvals | CSA EEV UL |
| Ambient Temperature | 40 °C |
| Auxillary Box | No Auxillary Box |
| Auxillary Box Lead Termination | None |
| Base Indicator | No Mounting |
| Bearing Grease Type | Polyrex EM (-20F +300F) |
| Blower | None |
| Current @ Voltage | 67.000 A @ 575.0 V |
| Design Code | B |
| Drip Cover | Drip Cover |
| Duty Rating | CONT |
| Efficiency @ 100% Load | 93.0 % |
| Electrically Isolated Bearing | Not Electrically Isolated |
| Feedback Device | NO FEEDBACK |
| Front Face Code | Standard |
| Front Shaft Indicator | None |
| Heater Indicator | No Heater |
| High Voltage Full Load Amps | 67.0 a |
| Insulation Class | F |
| Inverter Code | Not Inverter |
| KVA Code | F |
| Lifting Lugs | Vertical Lifting Lugs |

Part detail

| | |
|--------------|------------|
| Revision | G |
| Type | AC |
| Mech. spec. | 42E338 |
| Base | |
| Status | PRD/A |
| Elec. spec. | 42WG103 |
| Layout | 42LYE338 |
| Eff. date | 01-11-2022 |
| CD Diagram | CD0382 |
| Poles | 02 |
| Leads | 6#6 |
| Proprietary | False |
| Created date | 07-22-2016 |

| | |
|--------------------------------------|-----------------------|
| Locked Bearing Indicator | Locked Bearing |
| Motor Lead Exit | Ko Box |
| Motor Lead Quantity/Wire Size | 6 @ 6 AWG |
| Motor Lead Termination | Flying Leads |
| Motor Standards | NEMA |
| Motor Type | 4250M |
| Mounting Arrangement | F1 |
| Number of Poles | 2 |
| Overall Length | 32.50 IN |
| Power Factor | 90 |
| Product Family | Fire Pump Motor |
| Pulley End Bearing Type | Ball |
| Pulley Face Code | C-Face |
| Pulley Shaft Indicator | Tapped & Key |
| Rodent Screen | Included |
| Service Factor | 1.15 |
| Shaft Diameter | 1.577 IN |
| Shaft Extension Location | Pulley End |
| Shaft Ground Indicator | No Shaft Grounding |
| Shaft Rotation | Reversible |
| Shaft Slinger Indicator | Shaft Slinger |
| Speed | 3535 rpm |
| Speed Code | Single Speed |
| Starting Method | Wye Start - Delta Run |
| Thermal Device - Bearing | None |
| Thermal Device - Winding | None |
| Vibration Sensor Indicator | No Vibration Sensor |
| Winding Thermal 1 | None |
| Winding Thermal 2 | None |

Nameplate

NP3454L

| | | | | | |
|------------------|---------------|-----------------|------|------------------|------------|
| CAT.NO. | VJPFPM2549T-5 | CUST P/N | | I.P. | 23 |
| SPEC. | 42E338X103H2 | SER.NO. | | FRAME | 364JP |
| HZ | 60 | HP | 75 | RPM | 3535 |
| VOLTS | 575 | CODE | F | VOLTS | |
| AMPS | 67 | DES | B | AMPS | |
| EFF | 93 | SER.F. | 1.15 | PF | 90 |
| RATING | 40C AMB-CONT | DE BRG | 6313 | GREASE | POLYREX EM |
| BLANK | | ODE BRG | 6311 | MTR. WT. | 648 |
| | | CLASS | F | PH | 3 |
| | | ENCL | OPSB | CC | 010A |
| HTR-VOLTS | | HTR-AMPS | | HTR-WATTS | |

AC Induction Motor Performance Data

Record # 58312

Typical performance - not guaranteed values

| Winding: 42WGX103-R001 | | Type: 4250M | Enclosure: OPSB | | |
|------------------------|--------------|---------------------|---|-------------------------|-----------|
| Nameplate Data | | | 575 V, 60 Hz: Single Voltage Motor | | |
| Rated Output (HP) | 75 | Full Load Torque | 112 LB-FT | | |
| Volts | 575 | Start Configuration | direct on line | | |
| Full Load Amps | 67 | Breakdown Torque | 378 LB-FT | | |
| R.P.M. | 3535 | Pull-up Torque | 110 LB-FT | | |
| Hz | 60 | Phase | 3 | Locked-rotor Torque | 147 LB-FT |
| NEMA Design Code | B | KVA Code | F | Starting Current | 404 A |
| Service Factor (S.F.) | 1.15 | No-load Current | 15.5 A | | |
| NEMA Nom. Eff. | 93 | Power Factor | 90 | Line-line Res. @ 25°C | 0.145 Ω |
| Rating - Duty | 40C AMB-CONT | | Temp. Rise @ Rated Load | 41°C | |
| S.F. Amps | | | Temp. Rise @ S.F. Load | 51°C | |
| | | | Locked-rotor Power Factor | 21.2 | |
| | | | Rotor inertia | 3.91 LB-FT ² | |

Load Characteristics 575 V, 60 Hz, 75 HP

| % of Rated Load | 25 | 50 | 75 | 100 | 125 | 150 | S.F. |
|-----------------|------|------|------|------|------|------|------|
| Power Factor | 68 | 84 | 89 | 90 | 90 | 89 | 90 |
| Efficiency | 92.5 | 94.6 | 94.5 | 94 | 93 | 91.2 | 93.4 |
| Speed | 3585 | 3572 | 3556 | 3538 | 3518 | 3495 | 3526 |
| Line amperes | 22.4 | 35.3 | 50.3 | 67 | 84.7 | 104 | 77.6 |

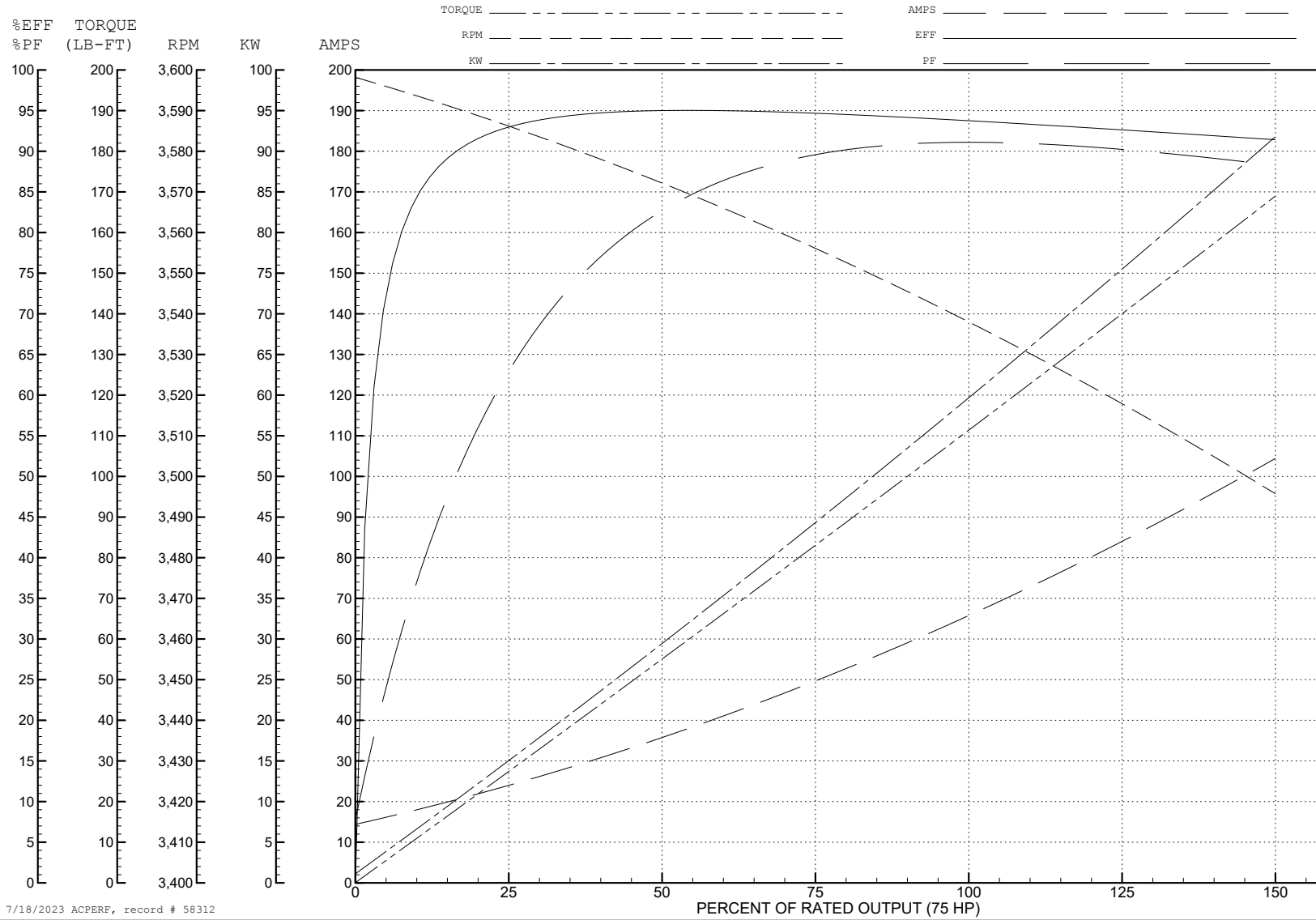
ABB Motors and Mechanical Inc.

WINDING # 42WGX103

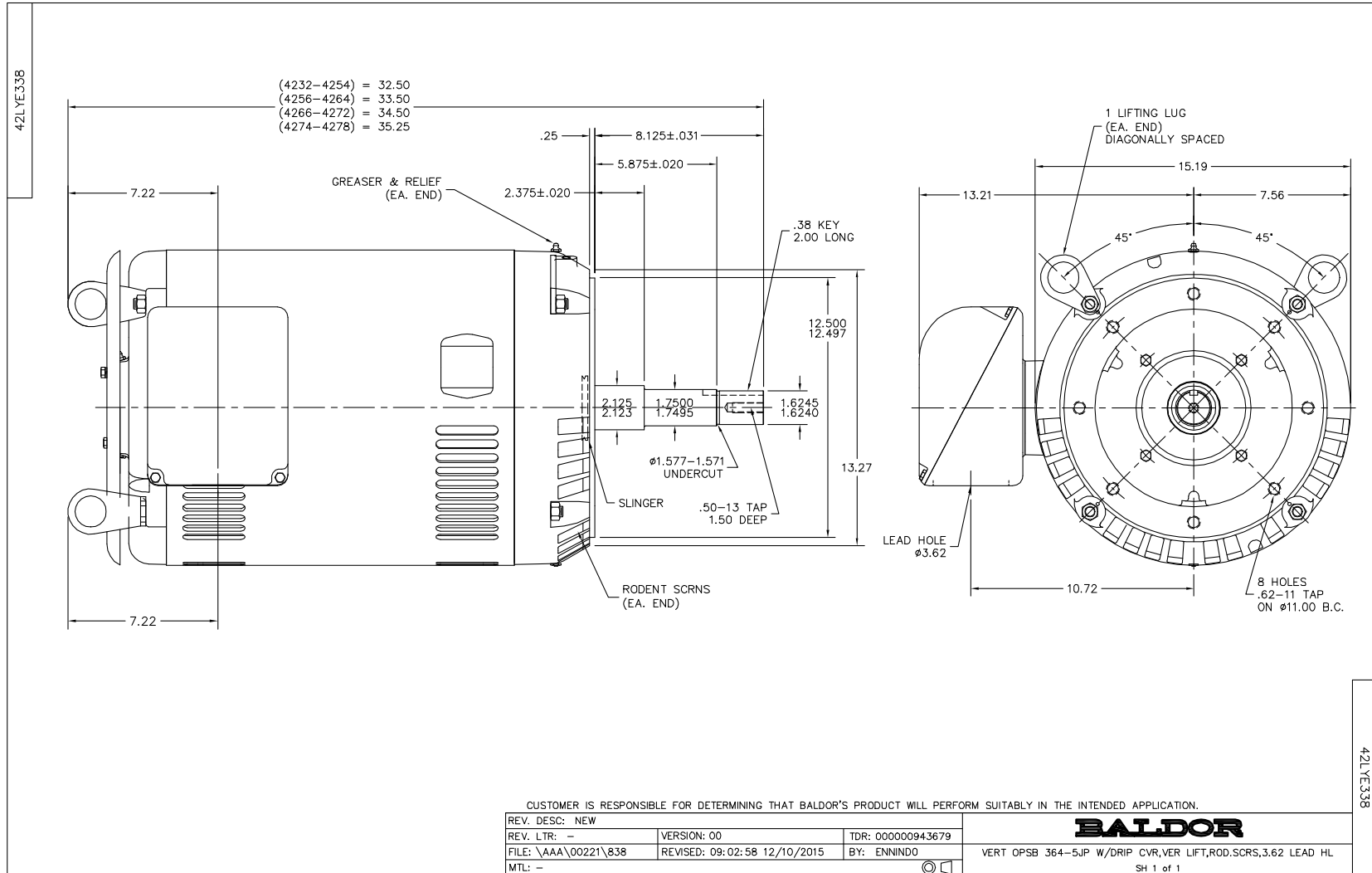
Typical performance - not guaranteed values.

75 HP 3 PH 60 HZ 3535 RPM 575 V 4250M

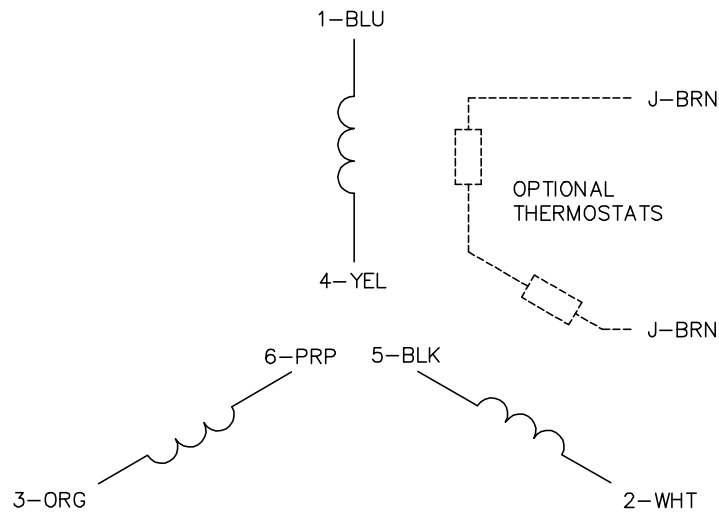
TORQUES (LB-FT): PO=378 PU=110 LR=147 LRA=404



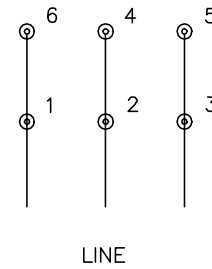
7/18/2023 ACPERF, record # 58312



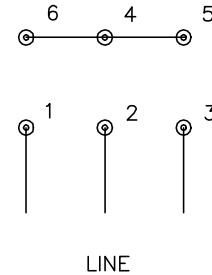
CD0382



RUN CONNECTION (1D)



START CONNECTION (1Y)



NOTES:

1. INTERCHANGE ANY TWO LINE LEADS TO REVERSE ROTATION.
2. OPTIONAL THERMOSTATS ARE PROVIDED WHEN SPECIFIED.
3. ACTUAL NUMBER OF INTERNAL PARALLEL CIRCUITS MAY BE A MULTIPLE OF THOSE SHOWN ABOVE.
4. LEAD COLORS ARE OPTIONAL. LEADS MUST ALWAYS BE NUMBERED AS SHOWN.
5. FOR ACROSS-THE-LINE STARTING, USE 'RUN' CONNECTION.

CD0382

| | | |
|-----------------------------------|------------------------------|-------------------|
| REV. DESC: ADD CLASS CONN00000007 | | |
| REV. LTR: F | VERSION: 01 | TDR: 000001099922 |
| FILE: \AAA\00005\243 | REVISED: 09:05:32 02/19/2019 | BY: ENBRIRO |
| MTL: - | © □ | |

BALDOR - RELIANCE®

3PH, SV, 6 LEADS, Y START/D RUN

SH 1 of 1